



ROOMS & SUITES

The Radisson Blu Royal Hotel, Dublin offers 150 spacious guest rooms including Business Class Rooms, Junior Suites, One Bedroom Suites and a Presidential Suite. All our rooms are fully air-conditioned and

equipped with high-quality amenities such as flat-panel LCD televisions, Laptop sized safe, coffee and tea making facilities, and free high-speed and wireless Internet access. All guests will have the luxurious

choice between a bath and a walk-in shower. All Guest rooms feature king or twin beds and offer smoking or non-smoking preferences. Wheelchair accessible rooms are also available.

VERRES EN VERS

Friendly and welcoming, Brasserie de Verres en Vers is a new, modern interpretation of the French Brasserie. Quietly glamorous and sedately cool, design is an integral part, with clean lines, dark wood finishes and an elegant contemporary floral detail. Verres en Vers offers an excellent choice of menus from the signature Super Buffet Breakfast, to the La Carte Du Marche & A La Carte menus and also specialised menus for

Conference & Meeting Groups. The simple contemporary space with its chocolate brown leather, high-backed banquettes and booth-style table settings is punctuated by aged zinc candleholders and lamps, and the twinkle of candles lit in the evenings is echoed by the bespoke lighting at the restaurant's entrance, which sparkles quietly all day. Tables are laid with crisp white linen, large glasses, heavy cutlery and white crockery, with a solid and reassuring

feeling of old-fashioned classic quality and style.

Opening Hours

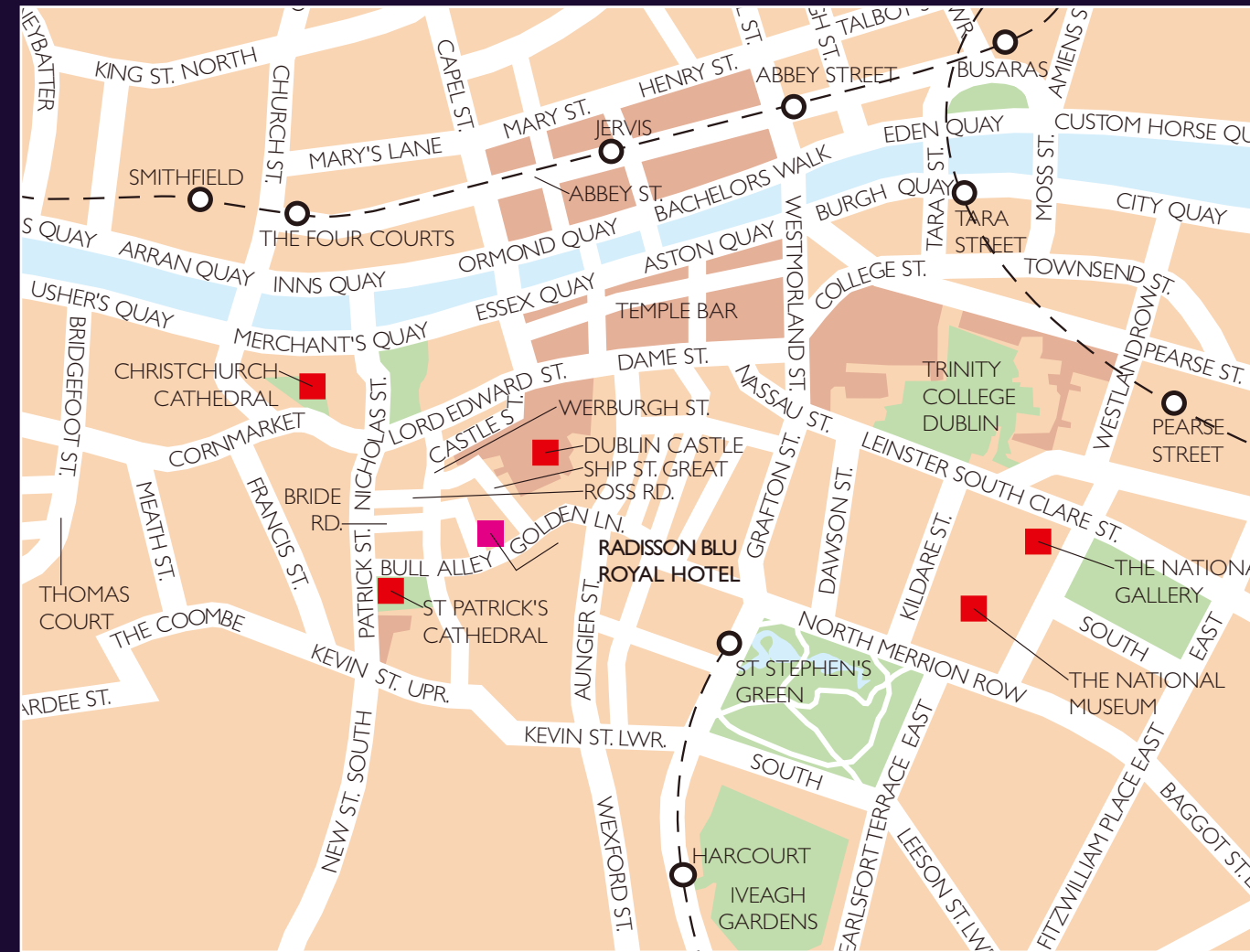
Grab & Run Breakfast: 05.00-07.00
 Breakfast Monday - Friday 06.30-10.30
 Breakfast Saturday & Sunday: 07.00-11.00
 Lunch: On request basis
 Dinner: 18.00 - 22.00
 Sunday Brunch: 13.00 - 16.00

SURE BAR

Sure is a style bar with an Irish flavour... to be Sure. Welcoming and unpretentious, it's a place to meet your friends and enjoy fantastic cocktails, a great selection of beers and a carefully chosen range of

wines. Of course a bar wouldn't be a bar without some great tunes. Ireland has some of the best musical talent and Sure mixes this vibe with the best of today's international music scene. Sure is open

all day every day. Come in, sit down, and enjoy hot and cold lounge food, an afternoon tea menu and a wide selection of coffees and fresh herbal teas.



BY CAR BY SOUTH QUAYS

- Drive along the south quays and turn left onto Bridge St. Lower
- Take a left onto Thomas St. which continues onto Commarket St.
- Take a right onto Nicholas St. which continues onto Patrick St.
- Take a left onto Kevin St. Upper
- Take a left onto Bride St.
- Take a right onto Golden Lane
- The hotel is on your left

BY CAR BY NORTH QUAYS

- Drive along the North Quays
- Take a right over Parliament St.
- Take a right on to Lord Edward St.
- Take a left on to Nicholas St. which continues onto Patrick St.
- Take a left onto Kevin Street Upper
- Take a left onto Bride St.
- Take a right onto Golden Lane
- The hotel is on your left

BY RAIL & AIR

The hotel is located in between Dublin Heuston Station and Connolly Station. LUAS operates from both stations and services the Jervis stop. From there, walk towards the River Liffey and cross at the Millennium Bridge. Walk southbound through Temple Bar and up George's St. Take a right onto Stephens Street/Golden Lane and the hotel is on the right hand side. Dublin International Airport is 12km from the hotel with regular taxi & coach services from the airport to the city centre, with journey times averaging about 30-45mins.

MEETING PLANNER

Radisson Blu Royal Hotel, Dublin

WELCOME TO RADISSON BLU



Radisson Blu Royal Hotel
 Golden Lane, Dublin 8, Ireland
 Tel: +353 1 898 2900, Fax: +353 1 898 2901
 info.royal.dublin@radissonblu.com
 radissonblu.ie/royalhotel-dublin

ENGLISH 11/09

Radisson **BLU**
 ROYAL HOTEL, DUBLIN

WELCOME

Welcome to the Radisson Blu Royal Hotel, Dublin. Located on Golden Lane, the hotel is situated right in the heart of Dublin's bustling city centre. The Radisson

Blu Royal Hotel is a fresh, modern property offering and new and exciting conference and event venue in Dublin City Centre. We can accommodate up to 400

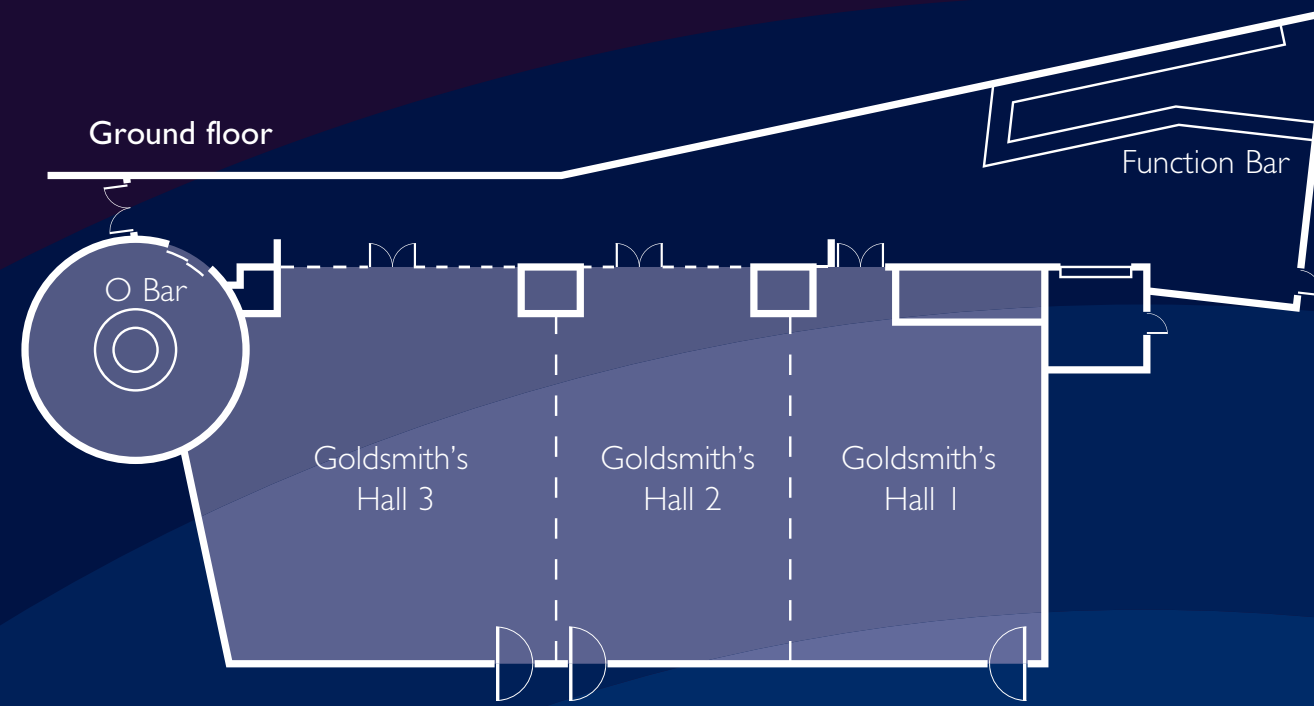
delegates theatre style in Goldsmith's Hall and we offer 150 bedrooms and suites, therefore we can accommodate sizeable group blocks.

MEETINGS & EVENTS

Our facilities are very unique and include a striking landscaped Rooftop Terrace Garden area which can accommodate up to 200 people for a BBQ or Outdoor Event. We also have the 7th floor Sky Suite which boasts stunning panoramic views of Dublin City Centre. This is a spectacular venue for a meeting with a real WOW! Factor or for a private cocktail reception and can hold up to 60 people. Our 1st floor is dedicated to Meeting Rooms and comprises of 2 Boardrooms, 4 Meeting rooms and a dedicated Video-Conferencing room. We also have 3 Corporate Syndicate

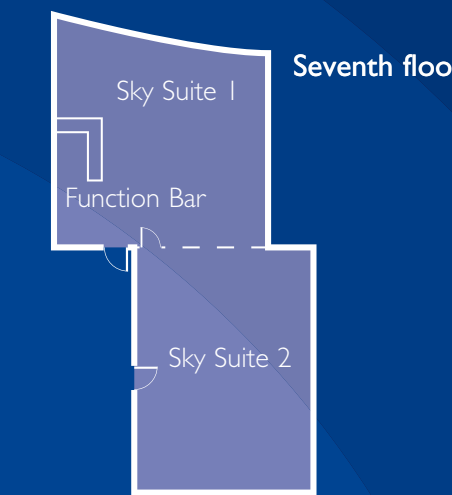
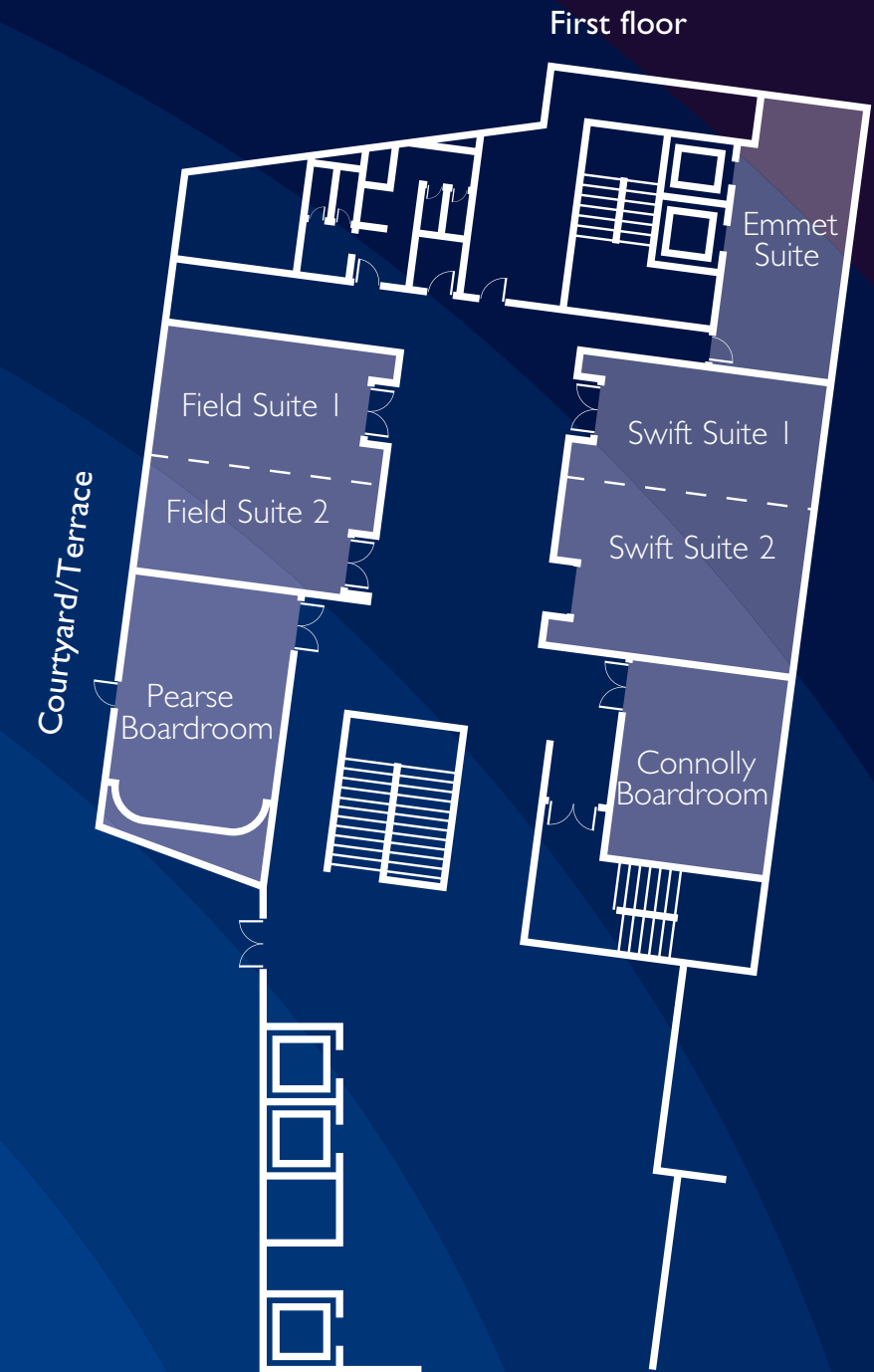
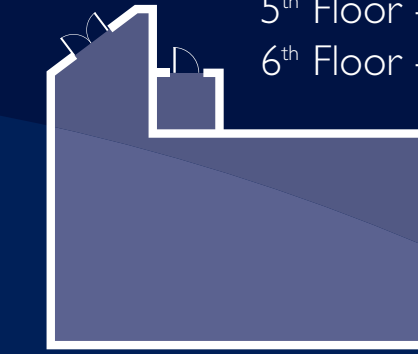
Rooms available. The 1st floor Meeting Area leads out in to the picturesque Landscaped Terrace Garden with its landscaped gardens and spectacular views over Dublin Castle. This in turn leads down to Goldsmiths Hall, which is the main conference/ballroom space. Goldsmiths Hall can hold up to 400 delegates. It is a flexible room and can be divided in to 3 separate rooms. We have also invested considerable time in to menu planning and conference organisers can choose from a range of distinctive buffet and plated lunches, and exciting refreshment breaks! We are centrally

located on Golden Lane, a 5 minute walk from St Stephen's Green and Temple Bar. There are excellent transport links in the area, with the St Stephen's Green Luas stop a mere 5 minute walk away. We are situated in between Heuston and Connolly train stations, the main train stations in the city. Dublin International Airport is 12 km from the hotel. The hotel has parking facilities for 60 cars. All of our venues are equipped with broadband internet access, air conditioning and natural daylight. The hotel features the latest audiovisual equipment, most of which is included in our room hire price.



MEETING ROOMS CAPACITY CHART																
		Theatre style	Class room	Board room	U-Shape style	Hollow Square	Banquet style	Cabaret style	Reception style	Floor area	Ceiling height	Length & width	Power points	Natural daylight	Lighting	Air con.
Ground floor	Pre-Conference Area	-	-	-	-	-	-	-	150	67	3.9	29 x 8	✓	✓	✓	✓
	Goldsmith Hall 1	112	72	33	33	42	80	42	110	108	3.9	12 x 9	✓	-	✓	✓
	Goldsmith Hall 2	112	66	33	33	42	80	42	110	92.7	3.9	8.2 x 12.1	✓	-	✓	✓
	Goldsmith Hall 3	168	90	36	36	48	100	70	150	130	3.9	12 x 10.8	✓	✓	✓	✓
	Goldsmith Hall 1 + 2	240	144	-	53	74	150	90	220	205	3.9	17.1 x 12	✓	-	✓	✓
	Goldsmith Hall 2 + 3	264	150	-	65	74	180	112	260	226	3.9	18.9 x 12.1	✓	✓	✓	✓
	Goldsmith Hall 1 + 2 + 3	400	240	-	-	-	270	161	370	314	3.9	26.1 x 12	✓	✓	✓	✓
First Floor	The O Bar	-	-	-	-	-	-	-	25	44	3.8	-	✓	✓	✓	✓
	Pearse Boardroom	-	-	16	-	-	-	-	-	43.5	2.8	8.9 x 5.8	✓	✓	✓	✓
	Connolly Boardroom	-	-	12	-	-	-	-	-	41	2.8	7.2 x 5.7	✓	✓	✓	✓
	Swift Suite 1	30	24	18	15	18	12	12	35	32.7	2.8	7.6 x 4.3	✓	✓	✓	✓
	Swift Suite 2	45	28	18	18	18	32	24	50	44	2.8	7.6 x 5.8	✓	✓	✓	✓
	Swift Suite 1 + 2	70	52	28	24	28	50	36	80	79	2.8	10.3 x 7.6	✓	✓	✓	✓
	Field Suite 1	30	18	18	16	18	12	18	35	34	2.8	7.3 x 4.6	✓	✓	✓	✓
	Field Suite 2	25	18	18	15	18	12	12	30	30	2.8	7.3 x 4.6	✓	✓	✓	✓
	Field Suite 1 + 2	50	36	24	24	24	40	28	60	64	2.8	8.8 x 7.3	✓	✓	✓	✓
	Emmet Suite	-	-	12	-	-	-	-	-	36.5	2.8	8.5 x 4.3	✓	✓	✓	✓
	Terrace Garden	-	-	-	-	-	-	-	300	270	-	22.5 x 12	✓	✓	✓	✓
Fourth Floor	The Ash Suite	-	-	6	-	-	-	-	-	49	2.1	7 x 4	✓	✓	✓	✓
Fifth Floor	The Olive Suite	-	-	6	-	-	-	-	-	49	2.1	7 x 4	✓	✓	✓	✓
Sixth Floor	The Rose Suite	-	-	6	-	-	-	-	-	49	2.1	7 x 4	✓	✓	✓	✓
Seventh Floor	Sky Suite 1	-	-	16	-	-	-	-	30	42.9	2.8	7.8 x 5.5	✓	✓	✓	✓
	Sky Suite 2	50	35	24	21	22	40	30	30	57.6	2.8	8.6 x 6.7	✓	✓	✓	✓
	Sky Suite 1 + 2	-	-	-	-	-	-	-	50	90	2.8	16.4 x 5.5	✓	✓	✓	✓

Syndicate Rooms
 4th Floor - The Ash Suite
 5th Floor - The Olive Suite
 6th Floor - The Rose Suite



goldpointsplus™

Earn Gold Points® for organising events at the Radisson Blu Royal Hotel, Dublin. Just register your meeting under your name and goldpoints plus membership card and reap the benefits.

For more information please see goldpointsplus.com/planners